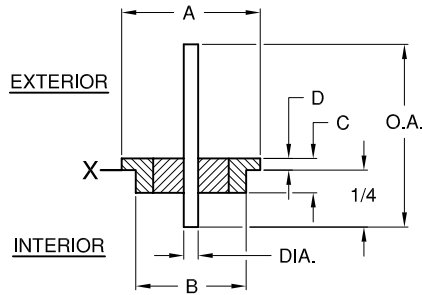
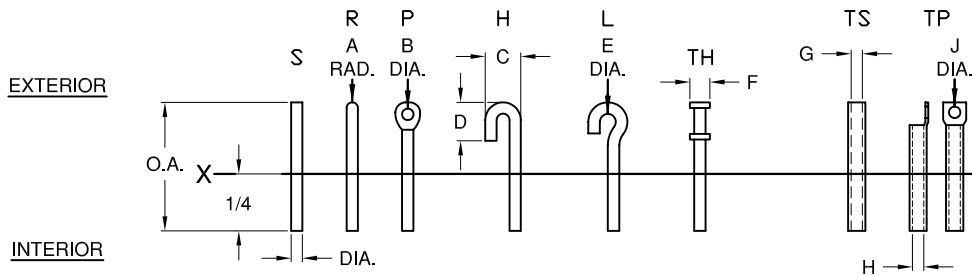


# MINIATURE HERMETIC ELECTRONIC SINGLE PIN FEED THRU TERMINALS

## SINGLE PIN FEED THRU, COMMERCIAL EQUAL HERMETIC GLASS-TO-METAL SEALED (VACUUM / PRESSURE FEED THRUS)



BODY	AØ	BØ	C	D	DIA AVAIL.
156E	.156	.125	.062	.015	.040 .060
187E	.187	.125	.062	.015	.040 .060
218E	.218	.150	.062	.015	.040 .060
250E	.250	.187	.093	.020	.040 .060
281E	.281	.225	.093	.020	.060 .093
375E	.375	.281	.093	.025	.060 .093
500E	.500	.370	.093	.025	.060 .093

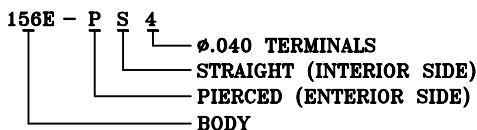


DIA.	A RAD.	B DIA.	C	D	E DIA.	F	G	H	J DIA.	O.A.
.040	.020	.045	.125	.125	.080	.070	.030	-	-	1/2
.060	.030	.060	.187	.156	.080	.090	.040	.040	.060	1/2
.093	.047	.078	-	-	-	-	.062	-	-	23/32

When interior is to be flattened and pierced add to O.A. and 1/4 Dimension as follows:

DIA.	ADD	HOLE SIZE	FOR ORDERING USE
.040	1/32	.045	4
.060	1/32	.060	6
.093	3/64	.078	9

### PART NUMBERING SYSTEM:



MATERIAL: STANDARD IS CRS BODY AND 52 NICKEL ALLOY PIN.  
STANDARD FINISH IS BRIGHT TIN PLATED BODY AND PIN, OTHER FINISHES AVAILABLE ON REQUEST.

### GENERAL SPECIFICATIONS

AIR LEAKAGE:  $1 \times 10^{-8}$  CM<sup>3</sup>/SEC AT 15psi  
INSULATION RESISTANCE: 10,000 megohms AT 500VDC  
OPERATING TEMPERATURE: -85°F TO +257°F (-65°C TO +125°C)

### CURRENT RATING:

SIZE 20: 5 AMPS  
SIZE 16: 10 AMPS  
SIZE 12: 17 AMPS

TOLERANCES: DECIMAL ±.005; FRACTIONAL ±1/64

**DETORONICS CORPORATION**  
10660 EAST RUSH STREET, SO. EL MONTE, CA 91733  
TELE: (626) 579-7130 FAX: (626) 579-1936  
[www.detoronics.com](http://www.detoronics.com)